

NOT PROTECTIVELY MARKED

# Neighbourhood Profile Update Cambridge City South Neighbourhood

November 2011



**PS Jim Stevenson**  
Neighbourhood Policing  
Sergeant

**Lynda Kilkelly**  
Safer Communities Manager  
Cambridge City Council



**CONTENTS**

<b>1. INTRODUCTION</b>	<b>2</b>
<b>Aim</b>	<b>2</b>
<b>Methodology</b>	<b>2</b>
<b>2. PREVIOUS PRIORITIES &amp; ENGAGEMENT ACTIVITY</b>	<b>3</b>
<b>Previous Priorities</b>	<b>3</b>
<b>Engagement Activity</b>	<b>5</b>
<b>3. AN INTRODUCTION TO ANTI-SOCIAL BEHAVIOUR (ASB) IN CAMBRIDGE CITY</b>	<b>5</b>
<b>4. EMERGING ISSUES</b>	<b>6</b>
<b>5. CURRENT CRIME AND INCIDENT LEVELS</b>	<b>11</b>

**1. INTRODUCTION****Aim**

The aim of the Neighbourhood profile update is to provide an overview of action taken since the last reporting period, identify ongoing and emerging crime and disorder issues, and provide recommendations for future priorities and activity in order to facilitate effective policing and partnership working in the area.

The document should be used to inform multi-agency neighbourhood panel meetings and neighbourhood policing teams, so that issues can be identified, effectively prioritised and partnership problem solving activity undertaken.

**Methodology**

This document was produced using the following data sources:

- Crime and Incident data from June 11 – September 11 and as a comparison data from February 11 – May 11 and June 10 – September 10.
- Information from the Neighbourhood Policing teams October 2011.
- Environmental data from Cambridge City Council for the period June 2011 – September 2011, compared with the same period the previous year.

## 2. PREVIOUS PRIORITIES & ENGAGEMENT ACTIVITY

### Previous Priorities

At the neighbourhood panel meeting on 11<sup>th</sup> July 2011, the following issues were adopted as priorities. The tables below summarise action taken and the current situation regarding the priorities which were set:

<b>Drug-misuse and associated anti-social behaviour - Arran Close, Cherry Hinton</b>	
<b>Objective</b>	<ul style="list-style-type: none"> <li>□ To reduce incidences of anti-social behaviour</li> <li>□ To seek to prosecute offenders and determine other methods of enforcement where appropriate</li> <li>□ To increase resident confidence in policing services.</li> </ul>
<b>Action Taken</b>	<ul style="list-style-type: none"> <li>□ Approximately 40 hours of dedicated patrols were conducted in Arran Close in addition to local staff paying attention to the area at key times during the in the course of routine duties.</li> <li>□ A search warrant under the Misuse of Drugs Act in Arran Close in late September resulted in the arrest of the occupant for the possession of drugs with intent to supply. The suspect is on bail whilst forensic examination of the items seized is conducted. The items are believed to Heroin.</li> <li>□ To assist in the collection of evidence and serve as a deterrent, a temporary CCTV has been secured and fitted in the area.</li> <li>□ A group of four youths have been frequently engaged by officers during patrols and Police and the City Council are looking at Acceptable Behaviour Contracts to curb ASB. Since engagement their presence in the area has receded.</li> </ul>
<b>Current Situation</b>	There has been a reduction in complaints from the community and incidents reported to Police during the period. Feedback from residents has been of increased police presence and a sense of feeling more reassured.
<b>Continue or Discharge?</b>	Suggest Discharge

<b>Anti-social and off-road use of Mopeds - Cherry Hinton and Queen Edith's</b>	
<b>Objective</b>	<ul style="list-style-type: none"> <li>□ To identify and engage offenders and seek to reduce incidences of anti-social use.</li> <li>□ Where necessary to make full use of powers under Sec.59 of the Police Reform Act to deny repeat and more serious offenders the use of the road through confiscation of vehicles.</li> </ul>
<b>Action Taken</b>	<ul style="list-style-type: none"> <li>□ Approximately 24 hours of dedicated patrols were conducted in the routes and location identified as problematic in addition to local staff paying attention to the area at key times during the in the course of routine duties. This is in addition to approximately 40 hours spent in the City East area working alongside East team colleagues to tackle similar behaviour by the same individuals there.</li> <li>□ Specific work in the South has revealed a small group of youths involved. Statutory (Sec.59 Police Reform Act) warnings regarding anti-social use of vehicles issued on 10 occasions. In one case, the recipient went on to carry out further ASB acts and his moped was seized under legislation.</li> <li>□ Further seizures have occurred in the East of the City also likely to impact positively on the problem in the South city vicinity.</li> <li>□ The parents of one youth central to the problem have been contacted concerning the potential effect on their housing tenancy if problems persist.</li> </ul>
<b>Current Situation</b>	Despite a reduction in calls for service some members of the group targeted remain active. It is felt that they be more active in the East of the City now. There are also some persons involved in both behaviour giving rise to this plan and anti-social congregation outside the High Street shops (see below).
<b>Continue or Discharge?</b>	For discussion at the Committee.

<b>Youth anti-social behaviour at High Street, Cherry Hinton</b>	
<b>Objective</b>	<ul style="list-style-type: none"> <li>□ To identify and disperse any problematic or anti-social groups of youths in the vicinity of the High Street.</li> <li>□ To provide immediate respite for businesses and residents adversely-affected by anti-social congregation.</li> </ul>

<b>Action Taken</b>	<ul style="list-style-type: none"> <li>□ Approximately 100 hours of duty time was spent on this issue during the period. Some congregation has been witnessed and close liaison maintained with Tesco stores as the main focal point of the groups. 16 incidents were reported during the period.</li> <li>□ Tesco reported some occasions during the period where the group were noisy or boisterous, but largely they were well behaved. Attempts to purchase alcohol and cigarettes by underage people were reported as frequent. During Police patrols underage drinkers were located on one occasion and seizures made.</li> <li>□ During the period it became clear that the congregation was relocating to green areas in and around Bridewell Road with complaints from residents received. Patrols were then focused on this area and the same group identified and engaged concerning the impact on immediately-adjacent residents during the evenings and into the night.</li> <li>□ During the period four searches under drug legislation were completed, but no drugs found.</li> </ul>
<b>Current Situation</b>	Total anti-social behaviour in Cherry Hinton has remained static during the period compared to the period immediately prior and same period in the previous year. The report of 16 incidents in the High Street during the period is reasonably low compared to previous periods.
<b>Continue or Discharge?</b>	For discussion at the Committee.

### Engagement Activity

Regular public surgeries are held at Cherry Hinton Village Centre, Waitrose Hauxton Road and Addenbrooke's Hospital. Full details are available on the Constabulary website [www.cambs-police.co.uk](http://www.cambs-police.co.uk) or by calling 101.

Members of the public wishing to discuss matters in a more private setting should contact the Constabulary on the number above and request contact to be made by one of the members of the Cambridge City South neighbourhood Policing Team.

### 3. AN INTRODUCTION TO ANTI-SOCIAL BEHAVIOUR (ASB) IN CAMBRIDGE CITY

It has been noted from recent Cambridge City Neighbourhood Panel Meetings that anti-social behaviour (ASB) issues are at the forefront of public concern. To address these concerns, this document will now mainly focus on ASB issues and will aim to give greater detail of the problems faced in each ward. As a result, included in this document will be a breakdown of ASB types as well as a summary of the issues raised by the public when reporting incidents. A summary of emerging issues

within crime will still be provided.

**Please note that due to changes in the Police incident reporting system, we will now be using the final call type rather than the Closure Class Definitions in the summary tables. The specific final call types for those incidents defined as ASB are included below**

CODE	DESCRIPTION
ABAN CALL	ABANDONED CALL
ABVEH	ABAN VEHICLE NOT STOLEN
ALARM	ALARM
ANIMALS	ANIMALS
ARREST	ARREST
BAIL	BAIL ENQUIRY/BREACH
BDV	BROKEN DOWN VEHICLE
BEGGING	BEGGING/VAGRANCY
BILKING	BILKING
BOMB	BOMB OR BOMB THREAT
BREACH INJ	BREACH OF INJUNCTION
BUR BUSNES	BURGLARY BUSINESS
BURG DWELL	BURGLARY DWELLING
BURG IN PR	BURGLARY IN PROGRESS
BURG OTH.	BURGLARY OTHER
CIVIL DISP	CIVIL DISPUTE
COLL/ILL	COLLAPSE/INJURY/ILLNESS
COMPOL	COMPLAINT V POLICE
CONCERN	CONCERN FOR PERSON
CORDLESS	CORDLESS
CRIM DAM	CRIMINAL DAMAGE
CRIME OTH	CRIME OTHER
DOM IN PR	DOMESTIC IN PROGRESS
DOMESTIC	DOMESTIC INCIDENT
DRUGS	DRUGS
DUP INC	INCIDENT BEING DEALT
ESCORT	ESCORTS - ALL
F/ARMS INC	FIREARMS INCIDENT
FIRE ETC	FIRE/ARSON
FIREWORKS	FIREWORK RELATED INCIDENT
FRAUD ETC	FRAUD/FORGERY
GAS/ELECTR	GAS & ELECTRIC
HIGHWAYS	HIGHWAYS DISRUPTION
HOAX CALL	HOAX CALL
INS PREMS	INSECURE PREMISES/VEHS
LICENSING	LICENSING
LITTER	LITTER
MAL/NUIS	MALICIOUS/NUISANCE COMMS

CODE	DESCRIPTION
MESSAGES	PASS MESSAGE
MFH	MISSING FROM HOME
NBOUR DISP	NEIGHBOUR DISPUTE
NOISE COM	NOISE - ALL TYPES
OBS MESS	OBSERVATION MESSAGE
OTH AGENCY	OTHER PUBLIC AGENCY
OTH. FORCE	OTHER FORCE
PETS	PETS/DOMESTIC ANIMALS
POACHING	COURSING/POACHING
POLICE GEN	POLICE GENERATED ACTIVITY
PREJ INC	PREJUDICE INCIDENT
PRE-PLAN	PRE-PLANNED EVENT
PROPERTY	LOST/FOUND PROP
PROSTITUTE	PROSTITUTION
PROTEST	PROTEST/DEMONSTRATION
PURSUIT	PURSUIT
R.T.C.	ROAD TRAFFIC COLLISION
RAVE	RAVE OR ANTICIPATED RAVE
RD RELATED	ROAD RELATED
RO ENQUIRY	REG OWNER ENQUIRY
ROBBERY	ROBBERY
ROWDY/NUIS	ROWDY/NUISANCE INCIDENT
SER SEX OF	SERIOUS SEXUAL OFFENCE
SEX OFF	SEXUAL OFFENCE
SHOPLIFTIN	SHOPLIFTING
SIL999_MOB	SILENT 999 OR 112 CALL FRM MOB
SIL999_TEL	SILENT 999 OR 112 FRM L/LINE
SMV	SMV
ST. DRINK.	STREET DRINKING - GENERAL
SUSP CIRCS	SUSPICIOUS CIRCS
THEFT	THEFT NOT VEH RELATED
THEFT FVEH	THEFT FROM M/VEH
TRANSPORT	TRANSPORT INCIDENT
TRESPASS	TRESPASS
TRUANCY	TRUANCY
VEH NUIS	VEHICLE RELATED NUISANCE
VIOL IN PR	VIOLENCE IN PROGRESS
VIOLENCE	VIOLENCE AGAINST PERSON

## 4. EMERGING ISSUES

### Neighbourhood trends

Overall, during the four-month period, total crime in the City South neighbourhood has been increased by around 14% against the previous

period but decreased by 26% compared the same period last year. Reductions on last year were observed across most crime types, particularly in dwelling burglary, cycle crime, violent crime and vehicle crime.

At 370 incidents reported, anti-social behaviour (ASB) levels across the neighbourhood have seen an increase of 25 incidents from the previous period. In spite of this, incidents levels remain lower than the same period last year in which a total of 411 incidents were recorded.

### **Trumpington**

- Total crime in Trumpington has seen an increase of 11 offences on the previous period and a reduction of 88 offences on the same four month period last year.
- This notable reduction was largely seen in non-dwelling burglary offences (down to 8 from 13 in the previous period), violent crime (26 from 41), vehicle crime (12 from 36), and cycle theft (37 from 67).
- There has been a reduction of non-dwelling burglaries (13 to 8). In half of the 8 offences a garage has been forced at the padlock and power tools stolen. These have occurred on different months. No offenders have been charged for these offences.
- There has been a reduction in dwelling burglaries in the area. In the 3 of the four offences that have occurred, the offender has gained entry to the building through an opened/unlocked door or window.
- Cycle theft offences have seen an increase in levels, with 37 offences reported compared with 29 reported in the previous period. Bikes were stolen mainly at the town end of Hills Road and its branching routes.
- ASB incidents have increased during this four month period with 123 incidents reported, compared to 100 the previous period, but have decreased on last year which saw 155 incidents for the same period. Rowdy/Nuisance behaviour is the main ASB issue affecting the area. Gonville Place has seen 12 calls during this period, many of which relate to arguments/fighting between younger males. Hills Road has seen 9 calls of this nature, again relating to arguments.

### **Environmental Issues**

- Between June and September 2011, there were 4 reports of abandoned vehicles in the ward compared with 4 during the same period the previous year. This included 3 vehicles, which were not on site following inspection. There were no specific hotspots during either period.
- Between June and September 2011, there were 25 reports of fly tipping in the ward compared with 31 during the same period the previous year. There was sufficient evidence to issue 3 formal warning letters to domestic offenders and a formal warning letter to trade offender. Anstey Way (4), Monkswell (4), George IV Street (3) and Princess Court (3) were the main hotspots during the current reporting period. The offences at George IV Street accounted for 2 of the formal warning letters being sent. Hanover Court (4), Russell Court (4) Anstey

Way (3), George IV Street (3) and Hills Road (3) were the main hotspots during the previous year.

- Between June and September 2011, 15 derelict cycles were dealt with compared with 37 during the same period the previous year. Russell Street (4) and Hills Road (3) were the main hotspots during the current reporting period. Hauxton Road (8), Kingfisher Way (4), Shelford Road (4), Gonville Place (3), Hills Road (3) and Porson Road (3) were the main hotspots during the previous year.
- Between June and September 2011, there were no needles reported in this area for either year.

### **Cherry Hinton**

- The total level of offences reported in Cherry Hinton has increased by 39 offences compared to the previous period but is 40 offences lower than the same period last year. In particular, reductions were noted in violent crime and dwelling burglary.
- Theft from vehicle offences have seen an increase as 33 offences were reported during the 4 months, compared to 17 in the previous period and 20 in the same period last year. In August and September there were several offences where the offender would smash a car window and grab whatever property is available. This property included cash, wallets/purses and satellite navigation systems. This was recently adopted as a priority for the division and since the time a reduction in offences has been seen.
- Dwelling burglaries has seen a decrease on both the previous period and the same period last year with only 4 offences occurring within this period. In all four offences the offender has attempted to gain entry to the house by forcing open a rear window or patio door. Entry has been gained in 3 offences and jewellery and small electrical items such as laptop computers have been stolen.
- There has been an increase in theft from shops with 6 occurring during this period. These all occurred at the same store on Rectory Terrace. Alcohol and food has been stolen during these offences with arrests and subsequent charges made in four of the offences.
- Cycle thefts have seen a further reduction to 13 offences. There is however there is a hotspot for the current thefts this being Cherry Hinton Road / St Bedes Crescent.area.
- ASB levels remains consistent with the previous period and the same period last year with 133 incidents reported over the last 4 months. The highest level of incidents were reported on the High Street (16 incidents), which were mostly youth-related nuisance such as throwing items at passing vehicles.
- There were 9 calls in regarding youths on Walpole Road, in particular many of the incidents relate to youths riding mopeds up and down the road and making lots of noise. There have been similar complaints of youths on mopeds in Cherry Hinton Road and Highdene Road.

### **Environmental Issues**



- Between June and September 2011, there were 15 reports of abandoned vehicles in the ward compared with 13 during the same period the previous year. This included 2 vehicles, which were not on site following inspection and 3, which were subsequently claimed by their owners. In addition, 2 CLE26 notices were issued to offenders on behalf of the DVLA for not displaying road tax on a public highway, which will result in a fine issued by the DVLA. High Street Cherry Hinton (3) & The Orchards (3) were the hotspots during the current reporting period. There were no specific hotspots for the same period the previous year.
- Between June and September, there were 27 reports of fly tipping in the ward compared with 28 during the same period the previous year. There was sufficient evidence to issue 3 formal warning letters to domestic offenders. In addition, 1 waste transfer documentation was requested from the trade offender. Colville Road (6), Limekiln Road (4) and St Bedes Crescent (4) were the main hotspots during the current reporting period. St Bedes Crescent (5) and Tenby Close (4) were the main hotspots during the previous year.
- Between June and September 2011, 14 derelict cycles were dealt with compared with 12 during the same period the previous year. Wenvoe Close (4) was the hotspot during the current reporting period. There were no specific hotspots during the previous year.
- Between June and September 2011, there were no needles reported compared with 5 during the same period the previous year. During the previous reporting period the 5 needles were removed from Cherry Hinton Road.

### **Queen Edith's**

- Comparatively, Queen Edith's has seen a slight increase in offences compared to the previous period, with 158 reported against 150. However there is a considerable reduction on the same period last year when 200 offences were reported. Reductions in theft from vehicle offences, criminal damage and non-dwelling burglary were largely responsible for the overall reduction.
- An increase of 7 dwelling burglaries was observed over the four-month period with only 4 offences being reported in the previous period. However, this is lower than the same period last year that recorded 18 offences. Of the 11 offences reported, an offender was arrested and charged with 1 offence. Entry was gained by forcing a rear door or window or via an open/unlocked door. Jewellery and small electrical items were the main target.
- Violent offences in Queen Edith's remain consistent with the previous 4-month period with 30 offences reported. This is comparatively lower than the 44 reported in the same period last year. Offenders were arrested and charged in 14 of these offences.
- Majority of the 9 theft from motor vehicle offences which occurred in this period involved the offender removing an item from the exterior of the vehicle. These included theft of tax disc from a motorcycle, theft of number plates and theft of wing mirrors. In another offence the victim left the vehicle insecure with a handbag on show which the offender

was able to steal with ease.

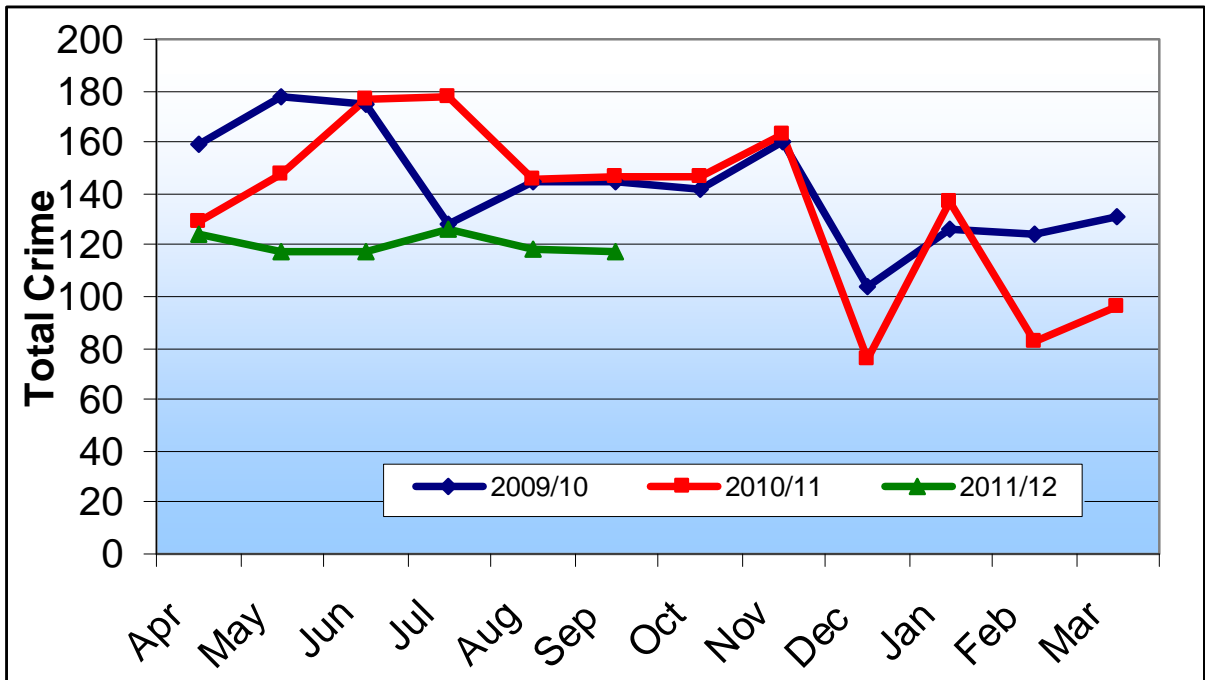
- Over the four-month period, 32 cycles were stolen. Despite a slight reduction in theft of pedal cycle offences in comparison to the previous period, offences remain consistent with the same period last year. The main streets in which cycles have been stolen during this period are Hills Road (8), Purbeck road (4), Long Road (3), Cavendish Avenue (3) and there was a continuation of offences in Blinco Grove which saw 2 stolen during this period and 3 in the few months leading up to this period.
- ASB levels in Queen Edith's have slightly decreased to 114 incidents over the four-month period from 116 previously. This is lower than the same level recorded in the same period last year that saw 123 incidents. Over a fifth of the incidents were reported on Hills Road (26), with 19 incidents relating to Hospitals. Gunhild Way recorded 9 incidents, with the majority of which were related to youths on mopeds. At least 5 of these calls were made from the same person. There were 9 incidents reported on Wulfstan Way which were mainly related to either youths throwing items or the behaviour of intoxicated persons. Furthermore, 4 incidents were reported in Gunhild Way in relation to youths causing a nuisance on mopeds.

### **Environmental Issues**

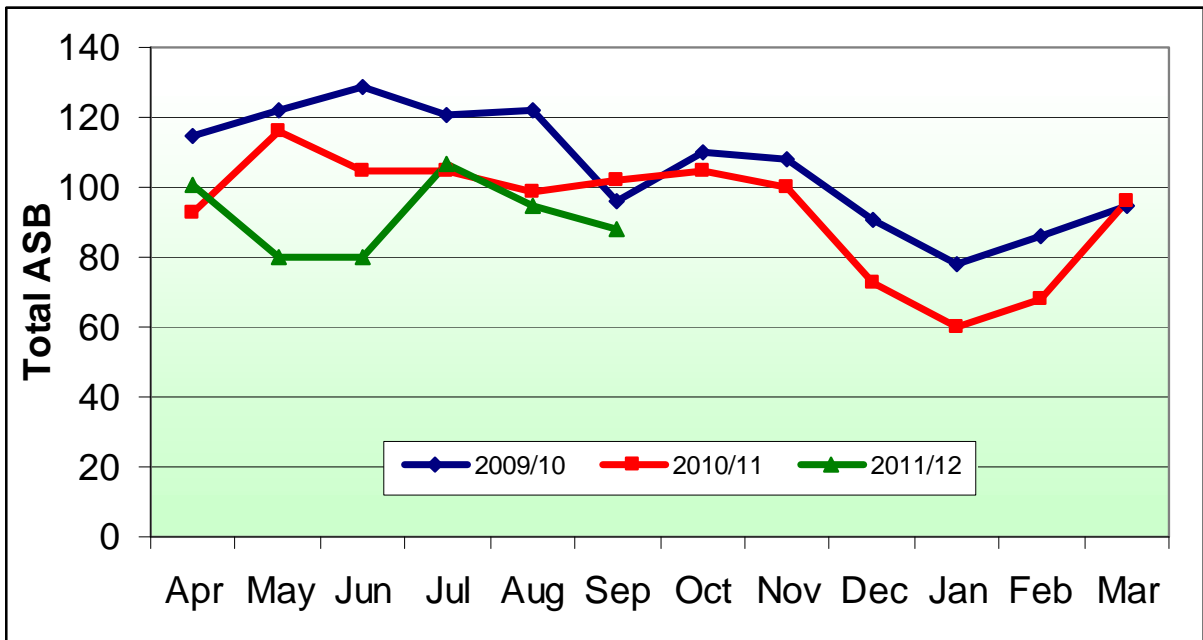
- Between June and September 2011, there were no reports of abandoned vehicles in the ward compared with 8 during the same period the previous year. There were no specific hotspots during previous year either.
- Between June and September 2011, there were nil reports of fly tipping in the ward compared with 15 during the same period the previous year. Wulfstan Way (7) was the hotspots during the previous year.
- Between June and September 2011, 18 derelict cycles were dealt with compared with 13 during the same period the previous year. Babraham Road (16) was the hotspot during the current reporting period. Babraham Road (3), Glenmere Close (3) and Wulfstan (3) were the main hotspots during the previous year.
- Between June and September 2011, there were no needles reported compared with 2 during the same period the previous year. During the previous reporting period the 2 needles were removed from Rock Road.

### 5. CURRENT CRIME AND INCIDENT LEVELS

#### Total Crime



#### Total ASB



**CURRENT CRIME AND INCIDENT LEVELS IN NEIGHBOURHOOD, BY WARD**

			Dwell. Burg.	Other Burg.	Violent Crime	Robbery	Theft of Vehicle	Theft from Veh.	Cycle Theft	Theft from Shop	Criminal Damage	Other Crime	TOTAL CRIME	TOTAL ASB
<b>N'Hod</b>	<b>City South</b>	<i>Jun 11 – Sep 11</i>	19	19	85	3	8	51	82	12	68	131	<b>478</b>	<b>370</b>
		<i>Feb 11 – May 11</i>	17	26	68	3	11	34	77	13	57	114	<b>420</b>	<b>345</b>
		<i>Jun 10 – Sep 10</i>	41	37	124	4	13	73	130	15	94	117	<b>648</b>	<b>411</b>
<b>Wards</b>	<b>Trumpington</b>	<i>Jun 11 – Sep 11</i>	4	8	29	1	3	9	37	5	21	46	<b>163</b>	<b>123</b>
		<i>Feb 11 – May 11</i>	7	13	18	3	0	9	29	6	22	45	<b>152</b>	<b>100</b>
		<i>Jun 10 – Sep 10</i>	5	13	39	4	4	32	67	13	26	48	<b>251</b>	<b>155</b>
	<b>Cherry Hinton</b>	<i>Jun 11 – Sep 11</i>	4	7	26	1	3	33	13	6	28	36	<b>157</b>	<b>133</b>
		<i>Feb 11 – May 11</i>	6	4	22	0	8	17	14	5	20	22	<b>118</b>	<b>129</b>
		<i>Jun 10 – Sep 10</i>	18	13	41	0	3	20	31	2	38	31	<b>197</b>	<b>133</b>
	<b>Queen Edith</b>	<i>Jun 11 – Sep 11</i>	11	4	30	1	2	9	32	1	19	49	<b>158</b>	<b>114</b>
		<i>Feb 11 – May 11</i>	4	9	28	0	3	8	34	2	15	47	<b>150</b>	<b>116</b>
		<i>Jun 10 – Sep 10</i>	18	11	44	0	6	21	32	0	30	38	<b>200</b>	<b>123</b>

## TOP 10<sup>1</sup> ASB INCIDENT TYPES IN THE CITY SOUTH NEIGHBOURHOOD, BY WARD

**Please Note:** Incident levels for each of the wards may not be consistent with the official figures that will be published by the Force and Home Office. This is because the data system used to draw the level of detail needed for the ASB type breakdown for this report may not contain precise locations due to the way incidents are reported e.g. ASB reported where ward boundaries lie could initially be recorded in the neighbouring ward but subsequently corrected. The figures should only be used as a guide and not regarded as official statistics for publication.

			ABANDONED VEHICLE (NOT SMV/OBSTRUCT)	CONCERN	MALICIOUS/NUIS. COMMUNICATION	NEIGHBOUR DISPUTE	NOISE (ALL TYPES)	ROAD RELATED	ROW & INCONSID BEHAVIOUR.	SUSPICIOUS CIRCUMSTANCES	VEHICLE NUISANCE	VIOLENCE	OTHER INCIDENTS	Grand Total
<b>N'Ho d</b>	<b>City South</b>	<i>Jun 11 – Sep 11</i>	16	1	30	8	29	8	199	4	30	13	21	371
		<i>Feb 11 – May 11</i>	23	5	27	6	17	8	172	6	34	25	21	344
<b>Wards</b>	<b>Trumpington</b>	<i>Jun 11 – Sep 11</i>	6	1	7	4	11	4	65	0	5	5	6	122
		<i>Feb 11 – May 11</i>	11	3	6	2	4	4	49	3	4	5	6	97
	<b>Cherry Hinton</b>	<i>Jun 11 – Sep 11</i>	5	0	12	1	8	1	79	3	11	3	8	134
		<i>Feb 11 – May 11</i>	10	2	10	3	3	0	70	3	13	8	8	130
	<b>Queen Edith</b>	<i>Jun 11 – Sep 11</i>	5	0	11	3	10	3	55	1	14	5	7	115
		<i>Feb 11 – May 11</i>	2	0	11	1	10	4	53	0	17	12	7	117

<sup>1</sup> The table shows top 10 different call types (final call types).

## **6. RECOMMENDATIONS**

The following Neighbourhood Priorities are recommended for consideration:

- ❑ Continuation of work to tackle anti-social and off-road use of Mopeds - Cherry Hinton and Queen Edith's
- ❑ Continuation of work to tackle youth anti-social behaviour in Cherry Hinton